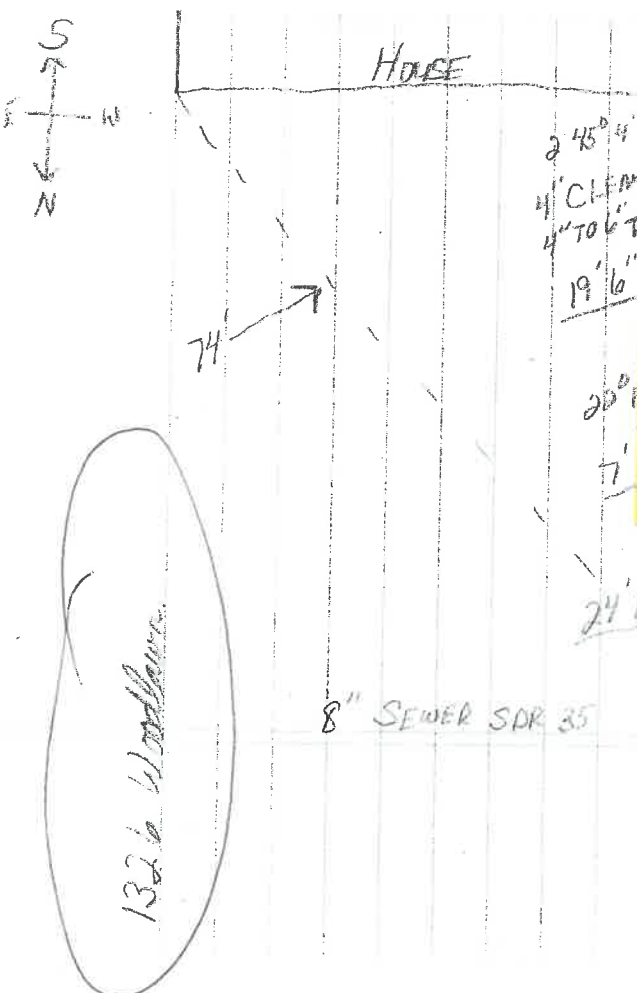


Notes

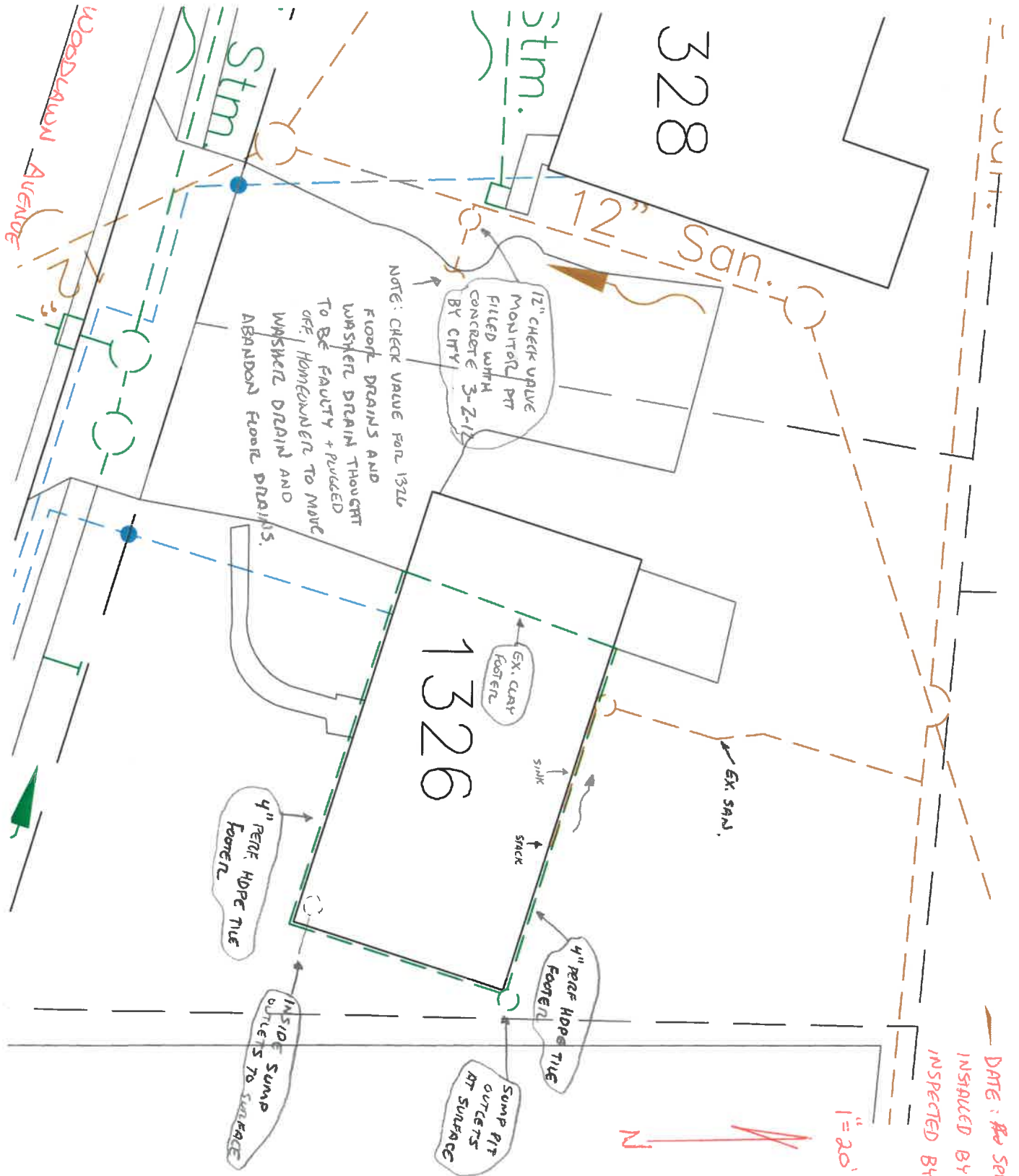
Jeff Rathge installed this lateral as part of easement agreement on Nov 4, 2003.

There is another deeper tap coming out on the west side of the building, that was installed in Sept. 2003. This service picks up the footer tile basement drains and washer. It is tapped in the new 12" sewer that runs parallel to the old point shop

EM 11-5-03



12-13-06
 1326 needs a storm Top for footer Tile Washer needs to go into sanitary This was Talked about in PC-06-12 when lot was split. This will be done when Woodlawn is redone
 TZ



328

1326

Woodlawn Avenue

Stm.

Stm.

12" San.

12" CHECK VALVE MONITOR PIT FILLED WITH CONCRETE 3-2-12 BY CITY

NOTE: CHECK VALVE FOR 1326 FLOOR DRAINS AND WASHER DRAIN THOUGHT TO BE FAULTY + PUSHED OFF. HOMEOWNERS TO MOVE WASHER DRAIN AND ABANDON FLOOR DRAINS.

EX. CLAY FOOTER

SINK

SPACE

EX. S.M.

4" PEAR HOPPE TILE FOOTER

4" PEAR HOPPE TILE FOOTER

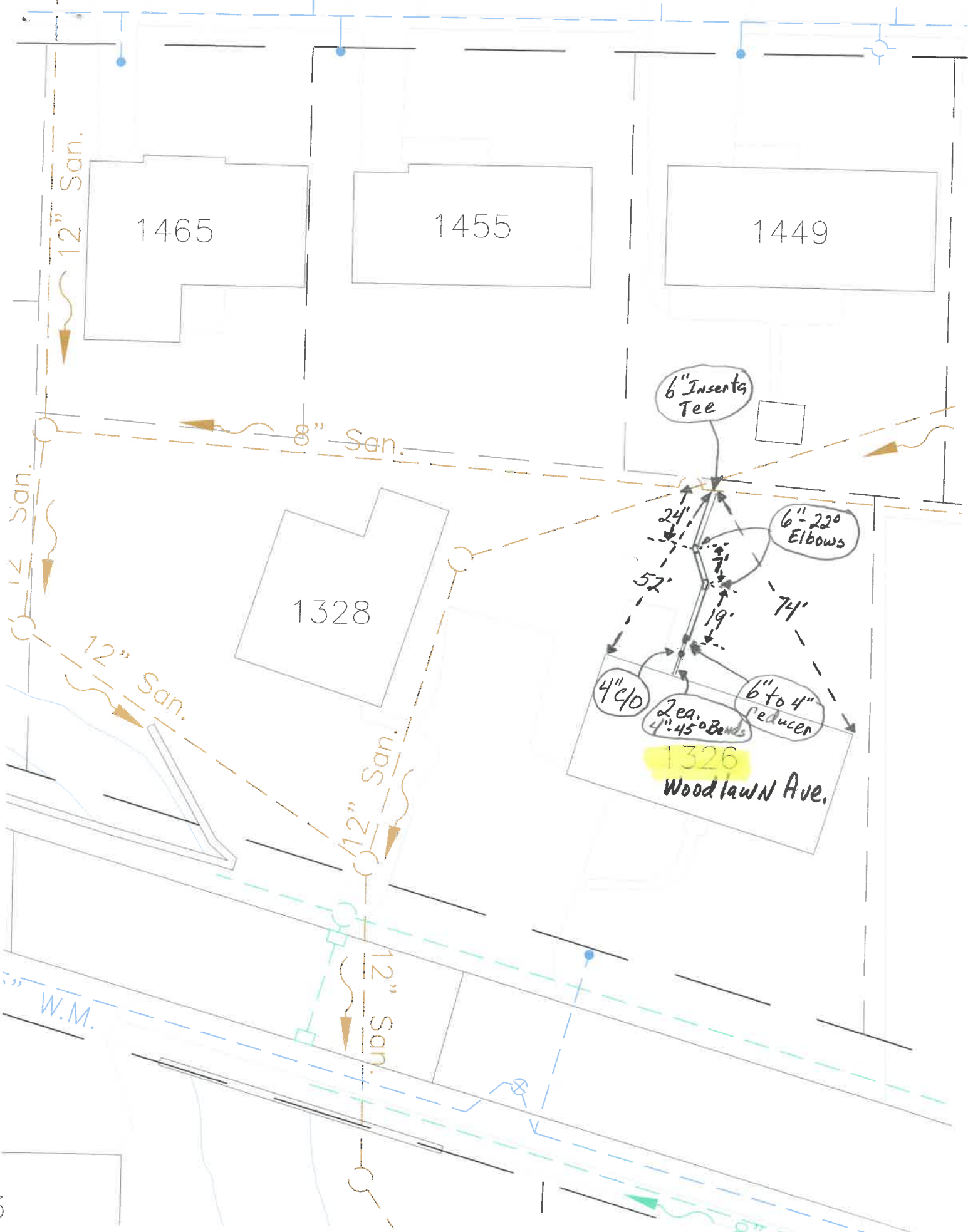
SUMP PIT OUTLETS AT SURFACE

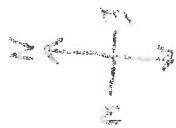
INSIDE SUMP OUTLETS TO SURFACE

1" = 20'



DATE: 20 SEPT, 2011
 CONCRETE INSITUATED BY: SPECIALISTS
 INSPECTED BY: MANTY CROSSLAND





1326 Woodlawn

8" SEWER SDR 35

HOUSE

GARAGE

COND.
PATIO

2 45° ELBOW
4' CLEANOUT
4' TO 6' PIPES
1 1/2" PVC

2 90° ELBOW

7 1/2" PVC

2 1/2" PVC

2 2" 6' SDR 35

1/2" INSERT
TEE

SDR

